

SDT-德制

DT-公制M/德制PG/NPT

尼龙堵头 Plug 金属堵头 Plug

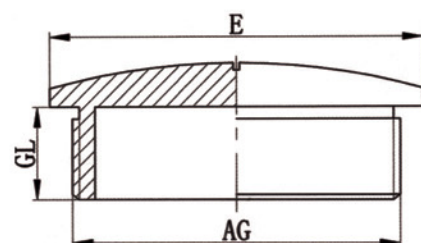


材质 Material	进口高级尼龙 (颜色可提供黑色、灰白色) Nylon (color can be black,gray)
特点 Features	适用于各种需堵孔的场所 The reserved hole of electrical equipment sealed to spare
工作温度 COT	-40°C ~100°C



1、可选附件：锁紧螺母、O型圈、平垫圈、锯齿垫片等

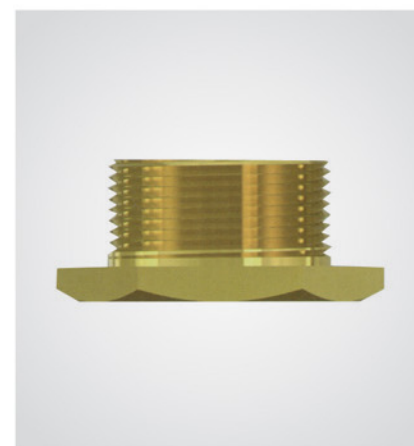
1、Optional accessories:reducer union ;lockion nut,O Ring,flat washer,serrated washers,see



订购示例 (e.g.) :SDTPG29

单位:mm

规格型号 Gland size	AG	GL	E
SDTPG7	PG7	7	15
SDTPG9	PG9	7	19
SDTPG11	PG11	8	22
SDTPG13.5	PG13.5	8	25
SDTPG16	PG16	8	27
SDTPG21	SPG21	8	33
SDTPG29	PG29	9	44
SDTPG36	PG36	11	55
SDTPG42	PG42	12	62
SDTPG48	PG48	13	69

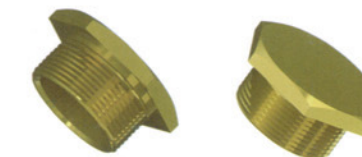
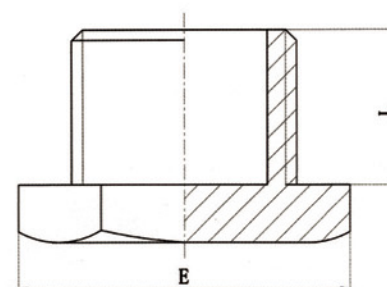


材质 Material	黄铜、黄铜镀镍或不锈钢 (订货时请指明) Brass、Nickel-plated brass、stainless steel (When ordering,please specify)
特点 Features	适用于各种普通电缆 Applicable to all kinds of ordinary cable
工作温度 COT	-40°C ~100°C



1、可选附件：锁紧螺母、O型圈、平垫圈、锯齿垫片等

1、Optional accessories:reducer union ;lockion nut,O Ring,flat washer,serrated washers,see



订购示例 (e.g.) :DT-M32X1.5

单位:mm

螺纹及规格 Size and thread			L (公制螺纹M/德制螺纹PG)	L (NPT)	E
DT-M12X1.5	DT-PG7	DT-NPT1/4	15	15.1	24
DT-M16X1.5	DT-PG9	DT-NPT3/8	15	15.3	26
.....	DT-PG11	15	...	30
DT-M20X1.5	DT-PG13.5	DT-NPT1/2	15	20	30
.....	DT-PG16	15	...	35
DT-M25X1.5	DT-PG21	DT-NPT3/4	15	20.2	35
DT-M32X1.5	DT-PG29	DT-NPT1	15	25.1	44
DT-M40X1.5	DT-PG36	DT-NPT1/4	15	25.7	58
DT-M50X1.5	DT-PG42	DT-NPT1/2	15	26.1	69
DT-M63X1.5	DT-PG48	DT-NPT2	15	26.9	81
DT-M75X1.5	DT-NPT1/2	15	40.1	98